

# ELEVATE YOUR LIFESTYLE




- **Vertical Gated Residential Community** with open communal spaces and **modern amenities in a safe and secure environment**
- Designed by Award Winning **Architect Arshad Shahid Abdulla**
- **All Corner 3 Bedroom Apartments**
- Large outdoor **Elevated Garden** with natural landscaping and 250 meters walking track
- Features and facilities **Cafe Lounge, Prayer Areas, Gymnasium, Laundromat, Community Hall, Indoor Kids Play Area etc.**
- **100% Backup Power Provision**
- Dedicated **Covered and Surface Car Parking** for residents and visitors
- **Centrally located** with Easy Access to all parts of the city
- Project to be **Managed by Dolmen Group**

**Project Near to Completion**

*Please Contact us at:*

 KPT Interchange Near DHA Phase 7 Ext. Karachi

 +92 305 173 5874 ; +92 3529 1411

 [www.groveresidency.com](http://www.groveresidency.com)

A Project of  
**dolmen**  
BUILDING A BETTER FUTURE

## Easy Home Financing Facility for Upto 20 Years

- Upto **60% Financing at Preferential Rates**
- **As low as 40%** to be paid in **easy monthly installments**
- No additional equity, security or guarantee is required
- Bank **Monthly Installments** as low as **PKR 300,000**
- **Tax Credit of upto 30%** on the Facility Markup Amount



# Experience Community Living

Modern Facilities & Amenities



Large Elevated Garden with 250m Walking Track



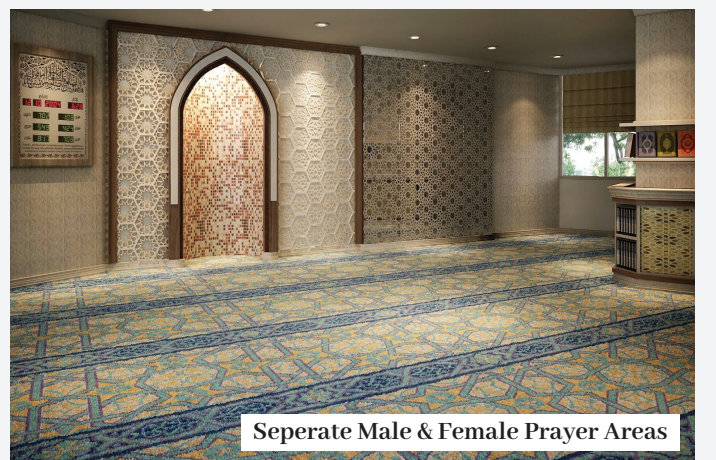
Kids Play Area



Cafe Lounge



Laundromat



Seperate Male & Female Prayer Areas



Gym Facility



Community Hall

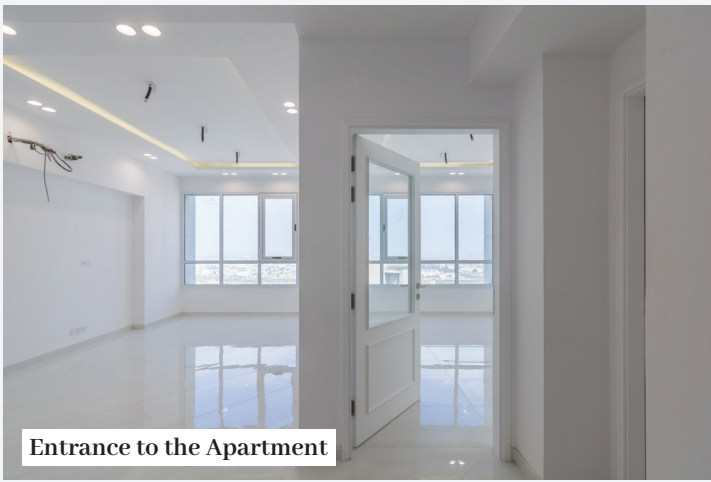


# Inspirational Urban Living

## Spacious & Practical Apartments



Drawing Room (Rendered)



Entrance to the Apartment



Living Room



Living Room



Drawing Room



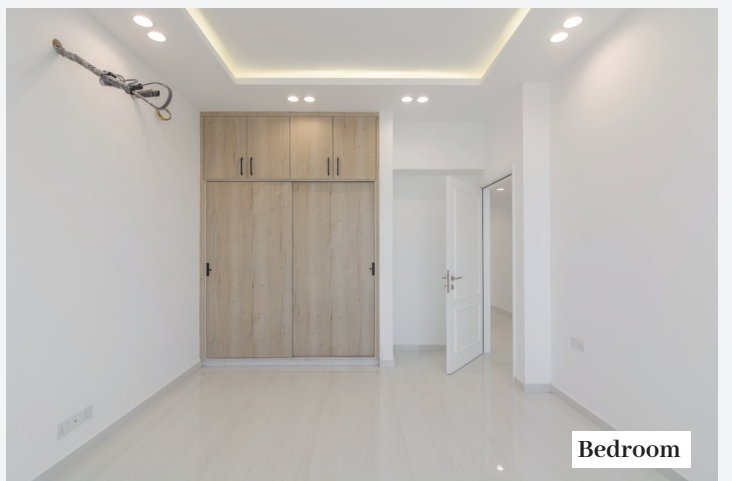
Drawing Room



Bedroom



Bedroom



Bedroom



Kitchen



Washroom



Apartment Lobby



Views of the City



## Premium Finishing Materials from Well Known Brands

The finishing materials procured are from the most well known names in the industry for home finishes to ensure A-quality installations along with extended warranty to add value to the residents living experience.



STEEL SUPPLIERS



## Most Renowned Architects, Contractors & Consultants

Class-A contractors commissioned alongside consultants and project management teams with vast experience that has ensured execution of a project of high quality.





# Dolmen Group - The Developer

## Redefining Premium Real Estate Developments



Since its inception in 1984, Dolmen Group has become Pakistan's premier real estate company, managing over **8 million sq. ft.** of high-quality developments. Specializing in development, construction, and management, our expert team delivers projects that set global standards. With the country's largest portfolio of shopping malls, Dolmen has redefined retail experiences across Pakistan.

Dolmen incorporates cutting-edge technology, innovative designs, and interior elegance to ensure comfort and convenience. Committed to excellence, Dolmen continues to surpass expectations, reshaping lives through impactful spaces.

Our mission: "We reshape lives," reflecting our dedication to transforming communities and elevating the real estate industry.

## Our Developments



Dolmen Mall Lahore



Dolmen Mall Clifton



Dolmen Mall Tariq Road



Dolmen Mall Hyderi



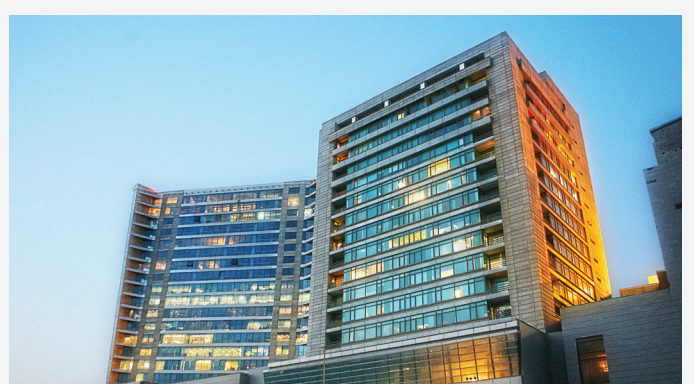
Sky Towers (East & West Wing)



The Harbour Front



Corporate Office Block



Executive Tower

For More Information, please visit

[www.dolmengroup.com](http://www.dolmengroup.com)